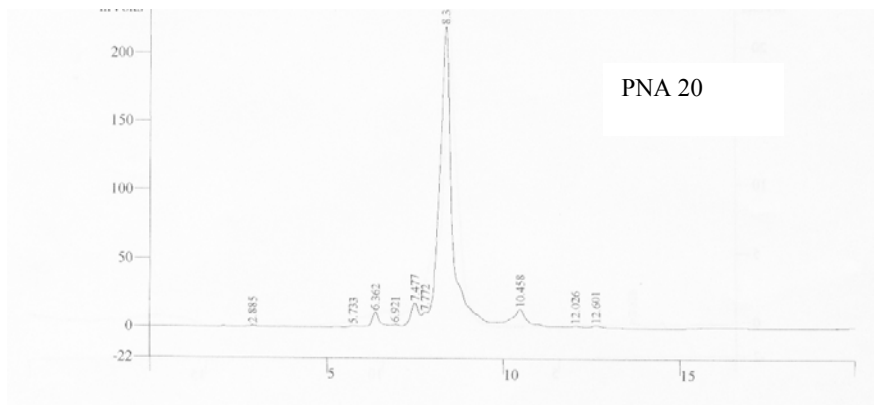
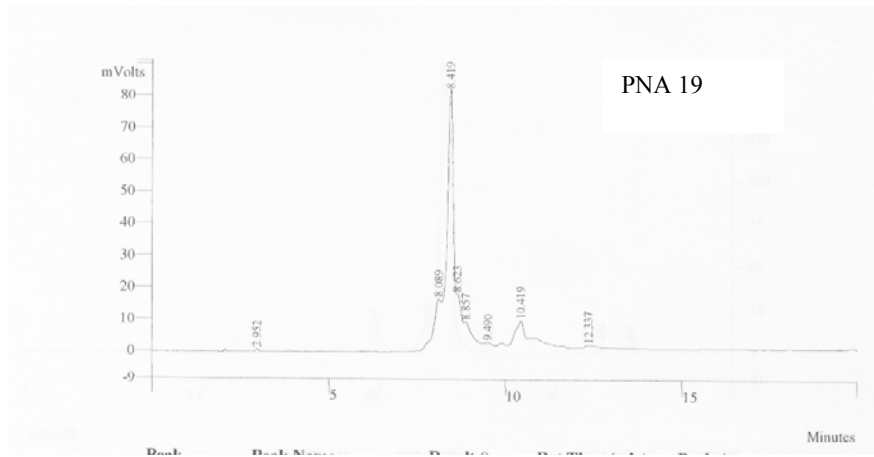
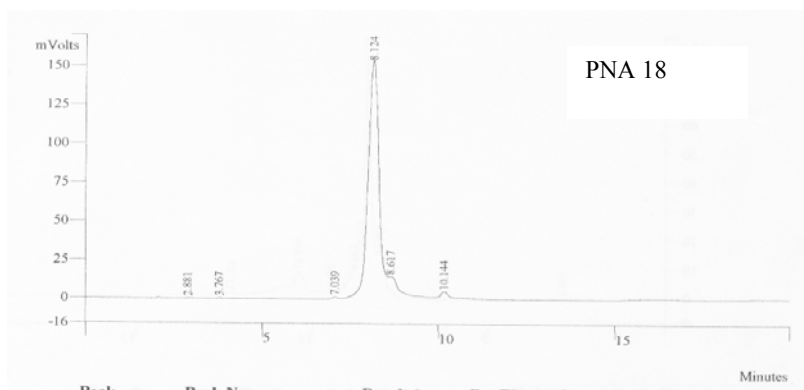
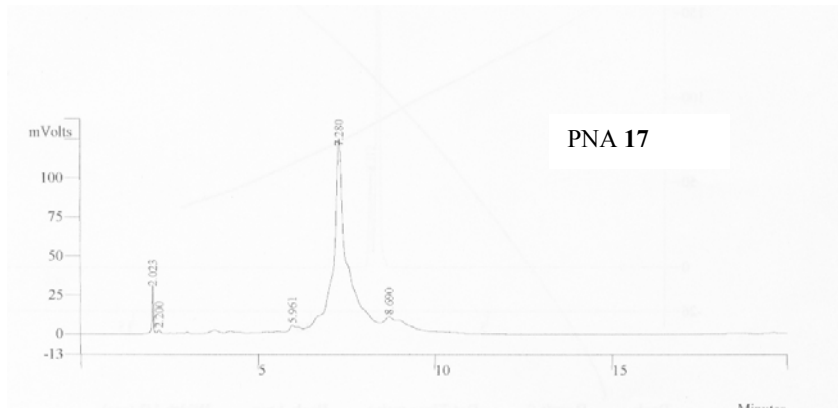


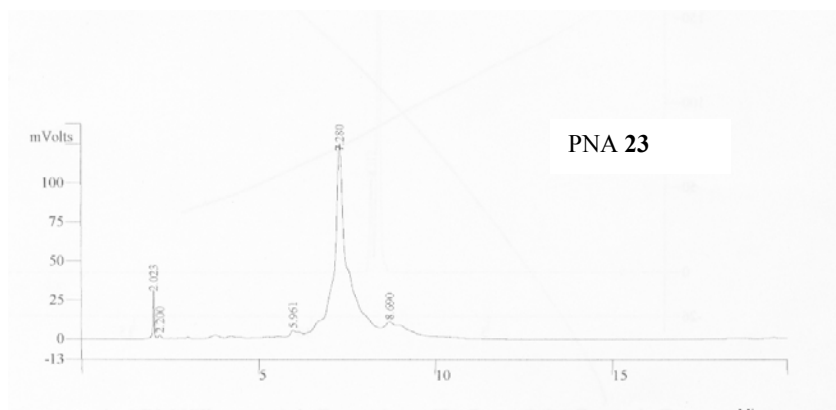
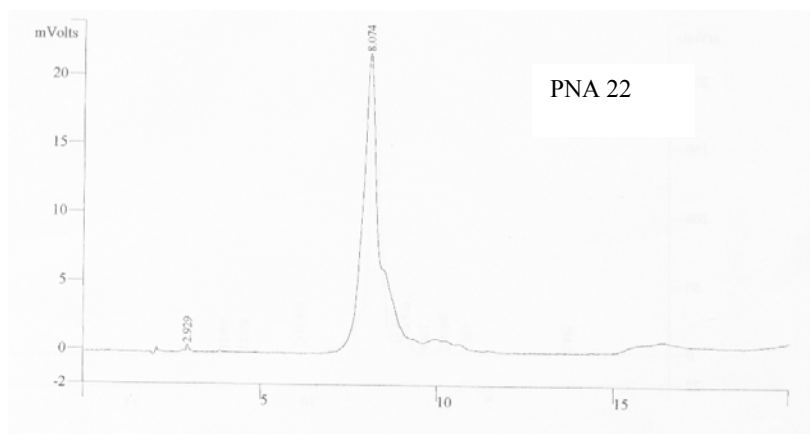
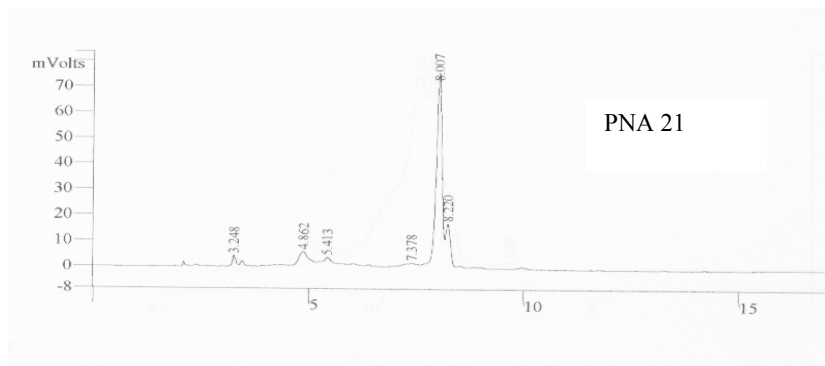
Chimeric (*aeg-pyrrolidine*)PNA: Synthesis and stereo-discriminative duplex binding with DNA/RNA

Pallavi S. Lonkar, Krishna. N. Ganesh and Vaijayanti A. Kumar*

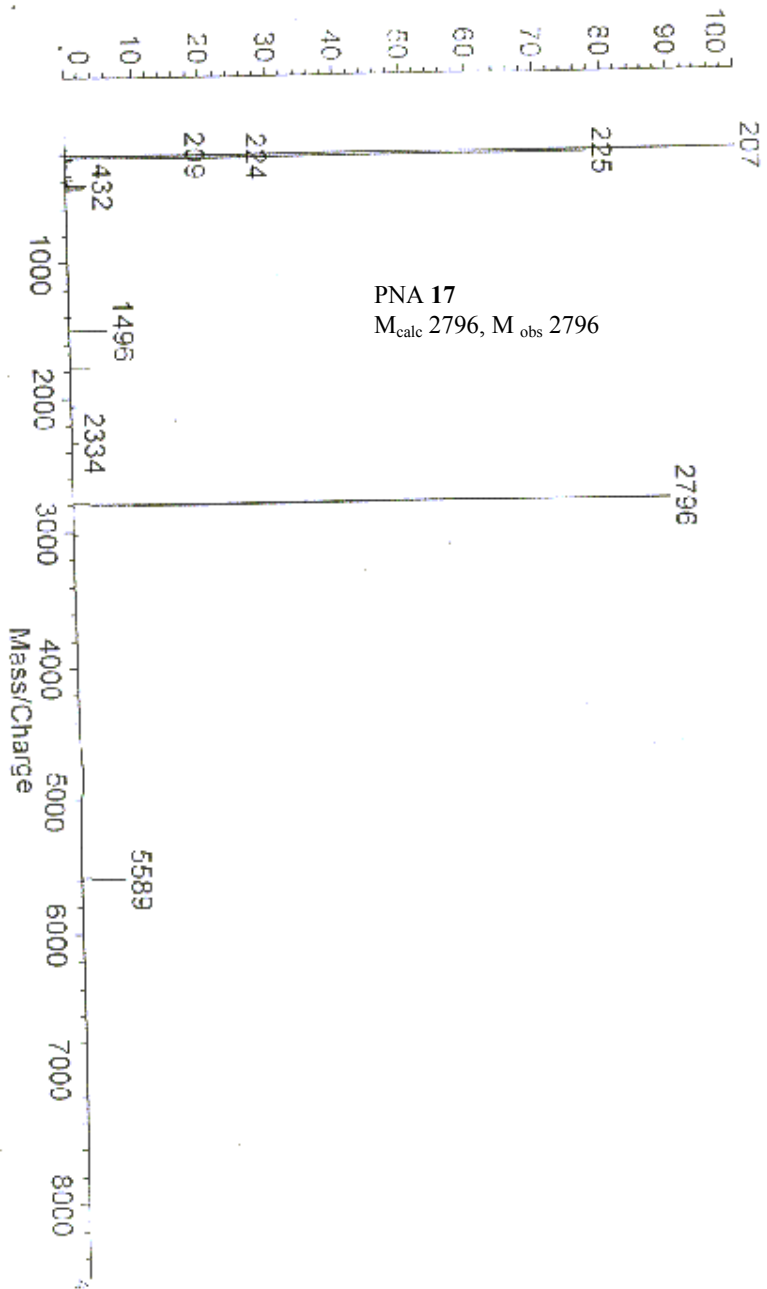
Supplementary Information

1. HPLC profiles for **17-23** pages 2-3
2. MALDI-TOF spectra for **17-23** pages 4-10
3. UV-mixing plot for PNA **19**:DNA **24** page 11
4. First derivative plots for PNA:DNA complexes page 12





ratos PCKcompact SEQ V1.2.2: + Linear High, Power: 91, P. EX: (0.2000 (um cu))
%Int. 100% = 34 mV[sum= 1410 mV] Profiles 1-41 Smooth Av 30
X2



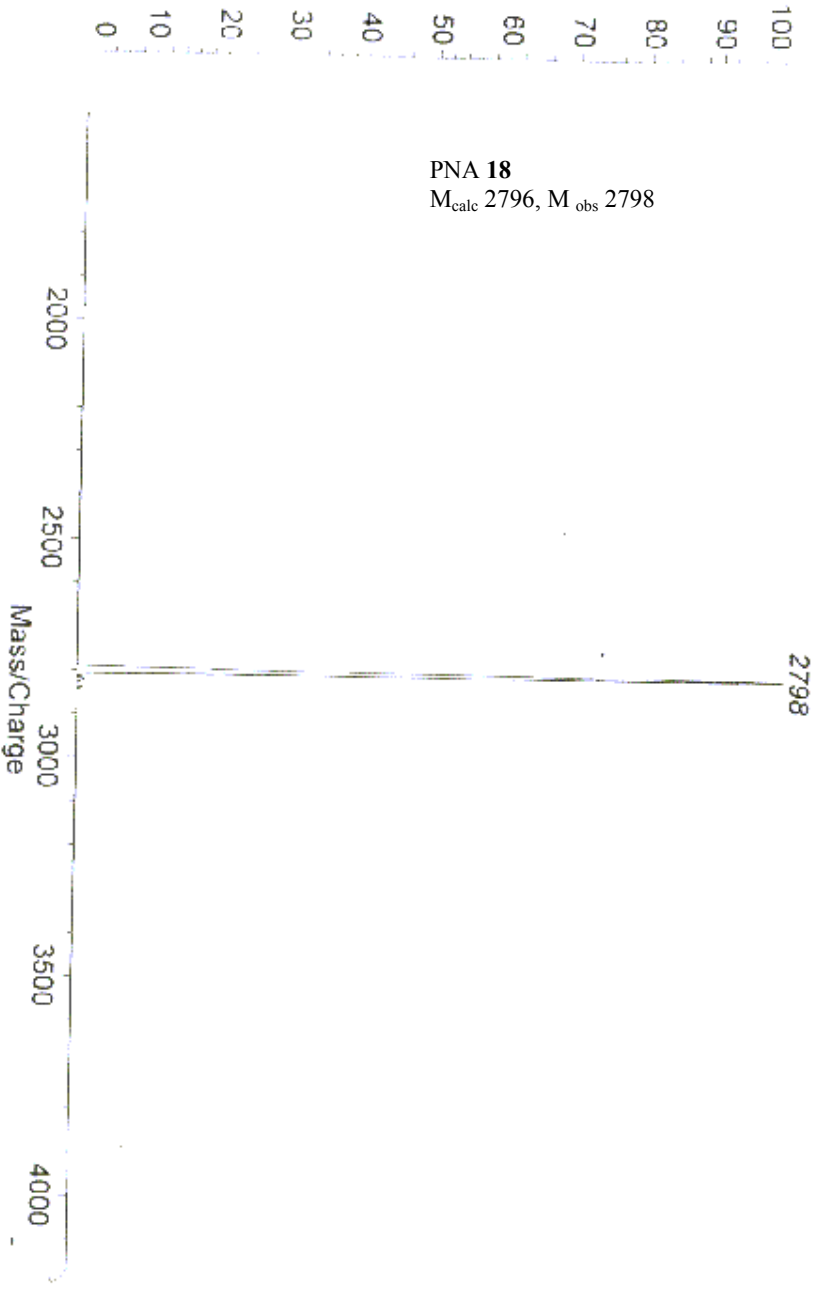
PNA 18 UNRESOLVED

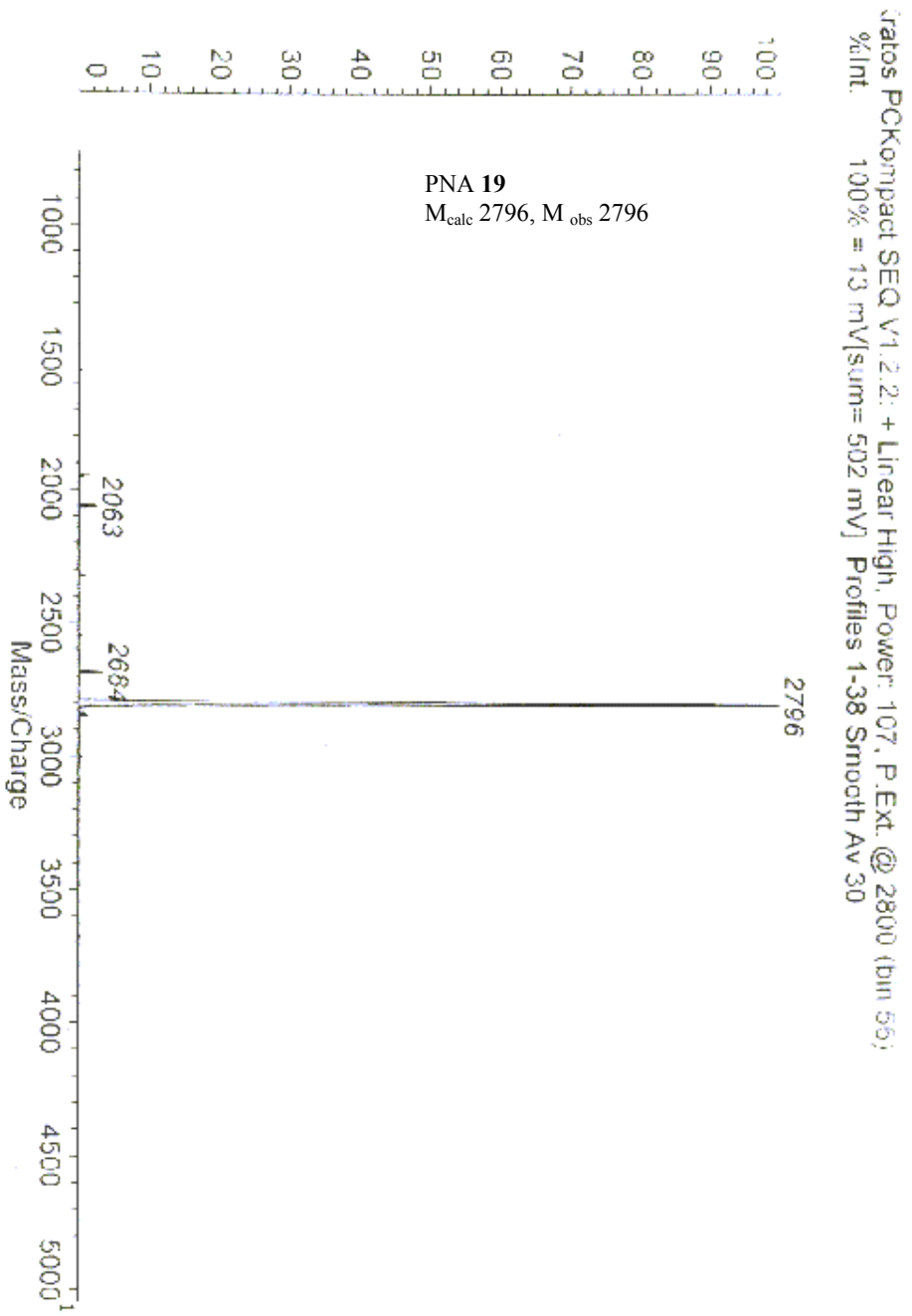
LTM-MIX + SINAPINIC ACID

Date: 11/07/2003 11:21 Cal: tot 8 Dec 2000 11:00

Kratos PCKompact SEQ V1.2.2: + Linear High, Power: 146, P.Ext. @ 5000 (bin 67)

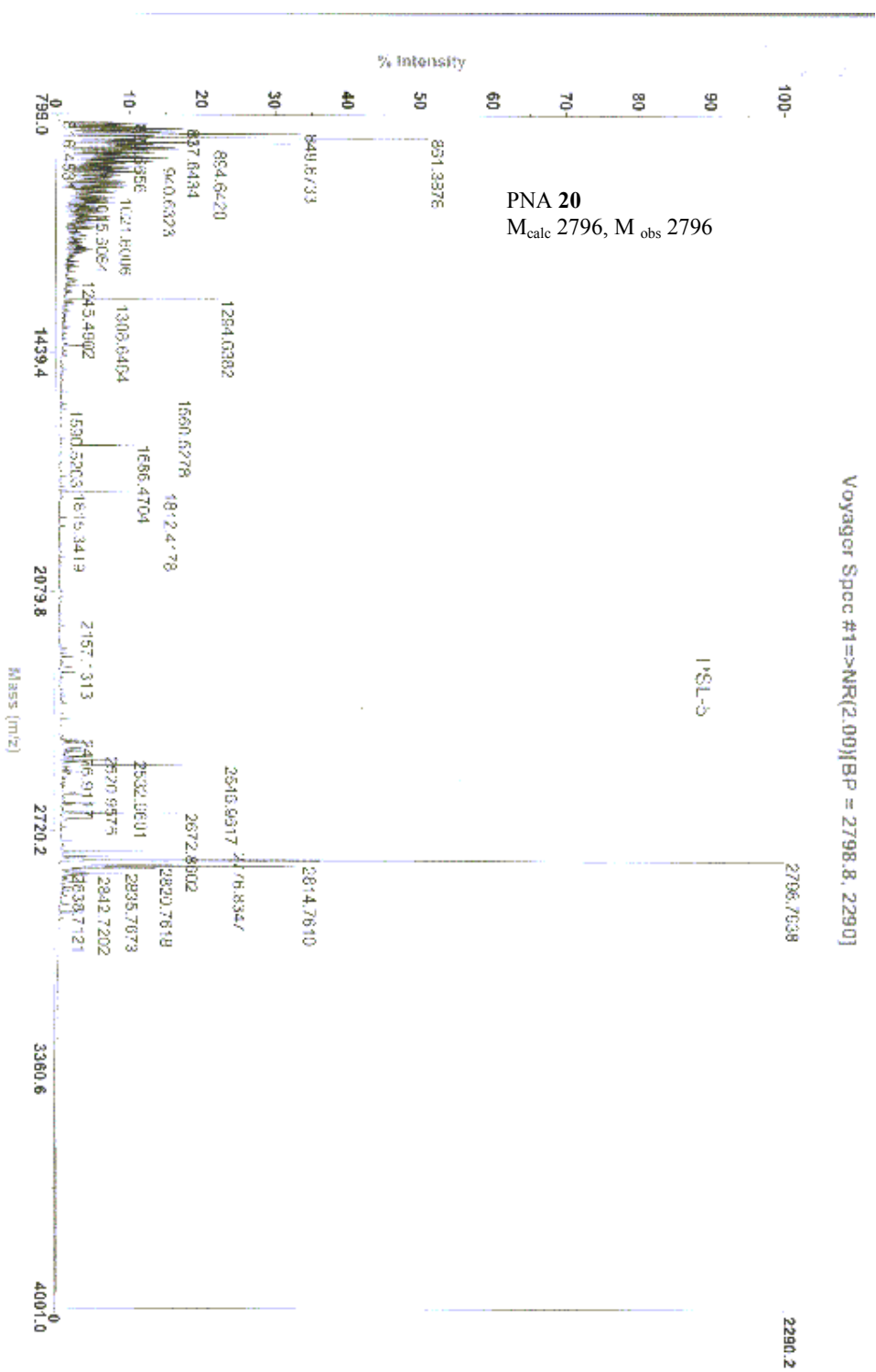
%Int: 100% = 21 mV[sum = 903 mV] Profiles: 1-44 Smooth Av 50





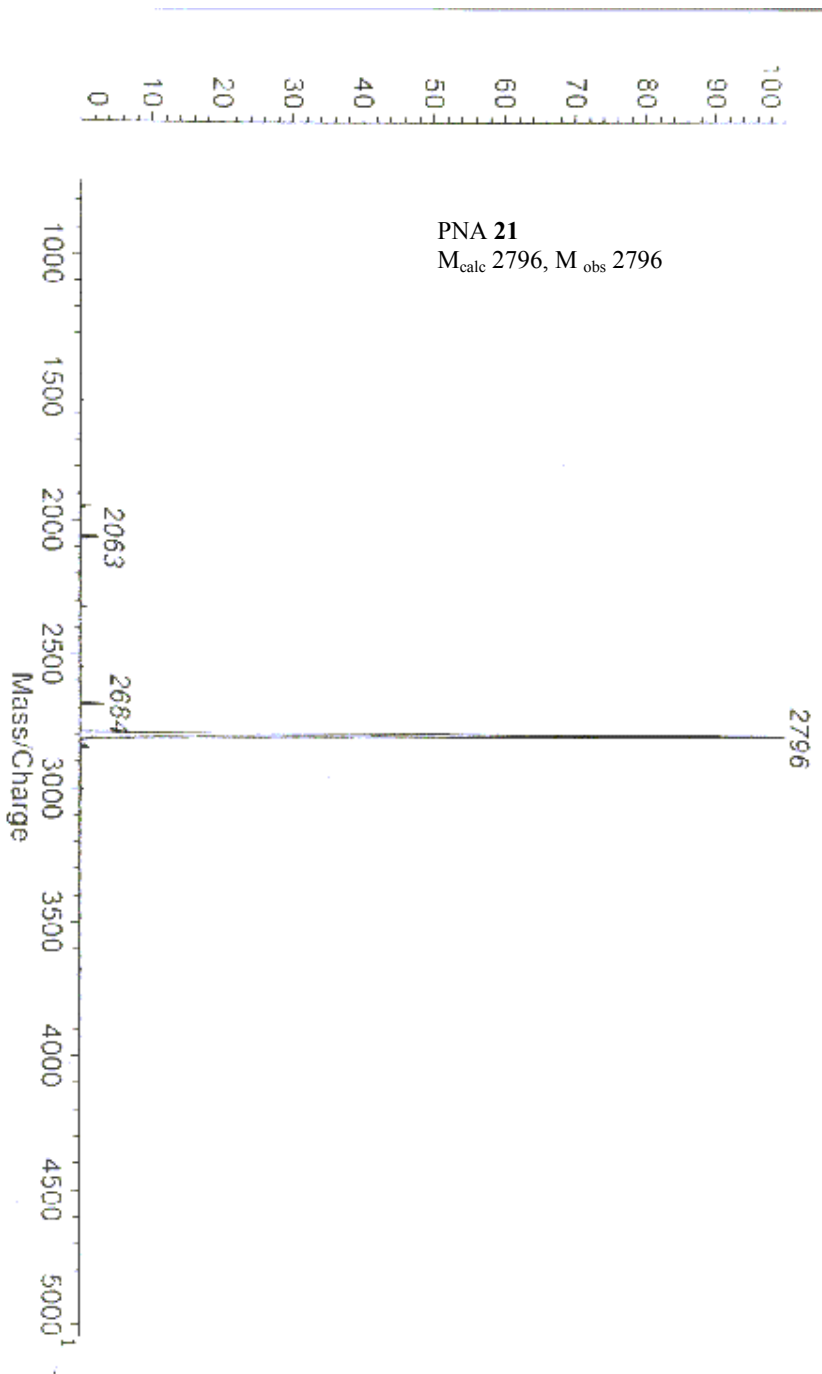
Voyager Spec #1=>NR(2.00)BP = 2798.8, 2290.1

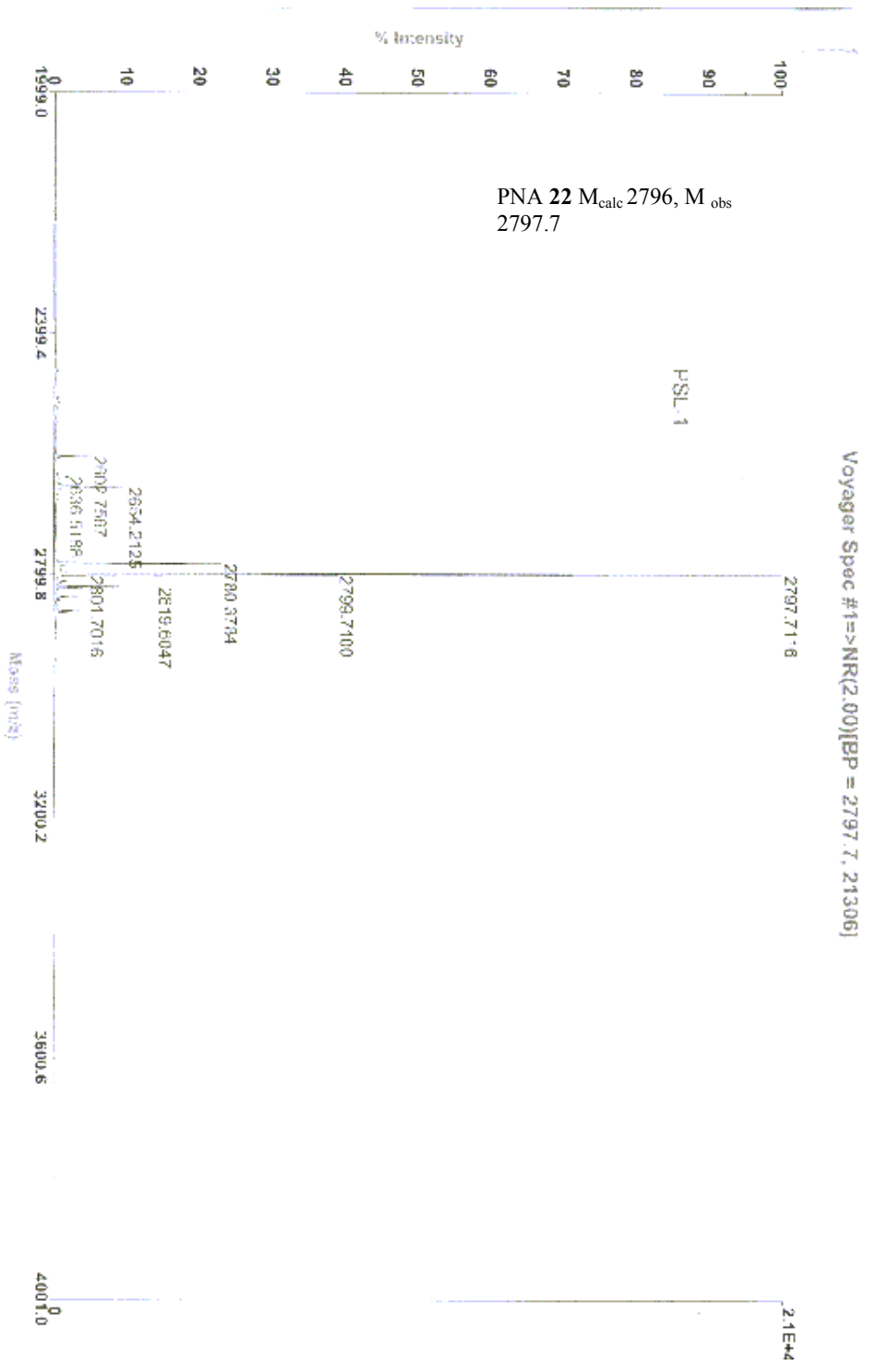
PNA 20
M_{calc} 2796, M_{obs} 2796



1.128, 6.000101
Acquisition: 11:37:00 February 11, 2004

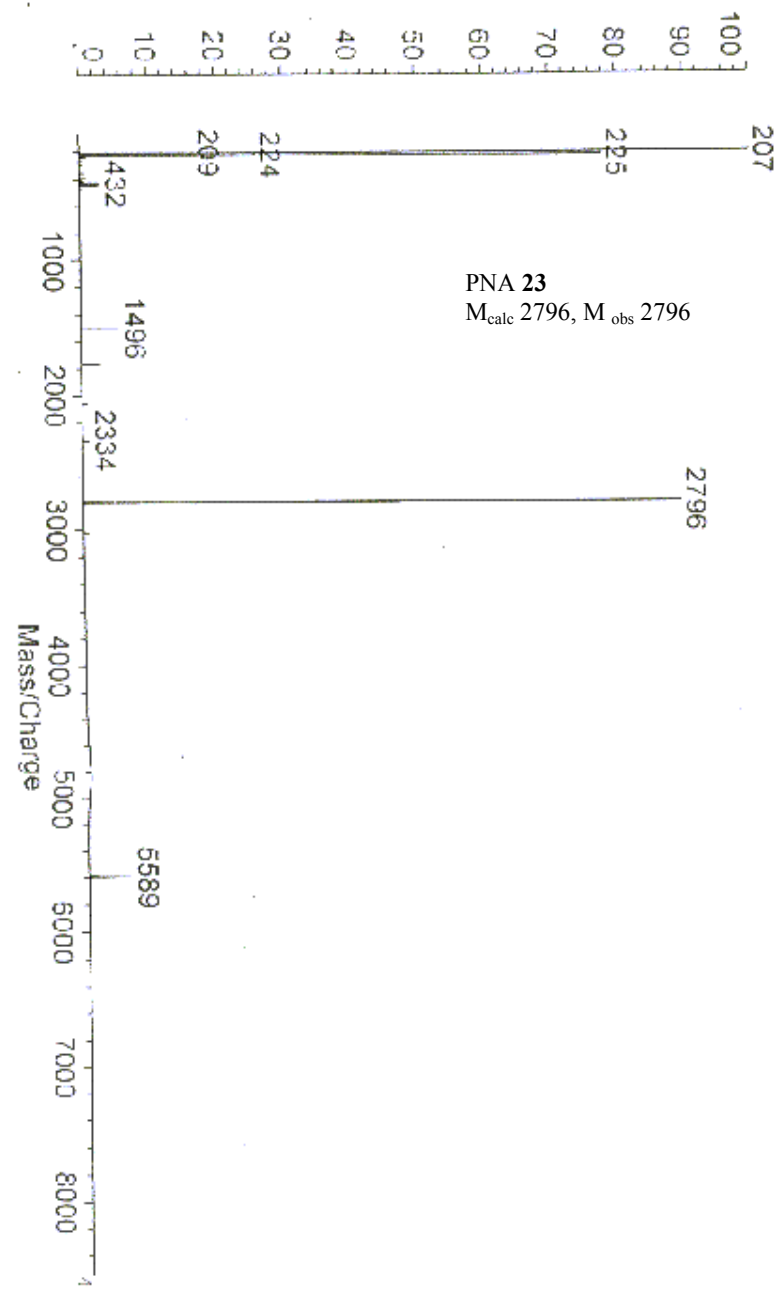
Crates PCKompact SEQ V1.2.2: + Linear High, Power: 107, P.Ext. @ 2800 (bin 55)
%Int. 100% = 13 mV[sum= 502 mV] Profiles 1-38 Smooth Av 30

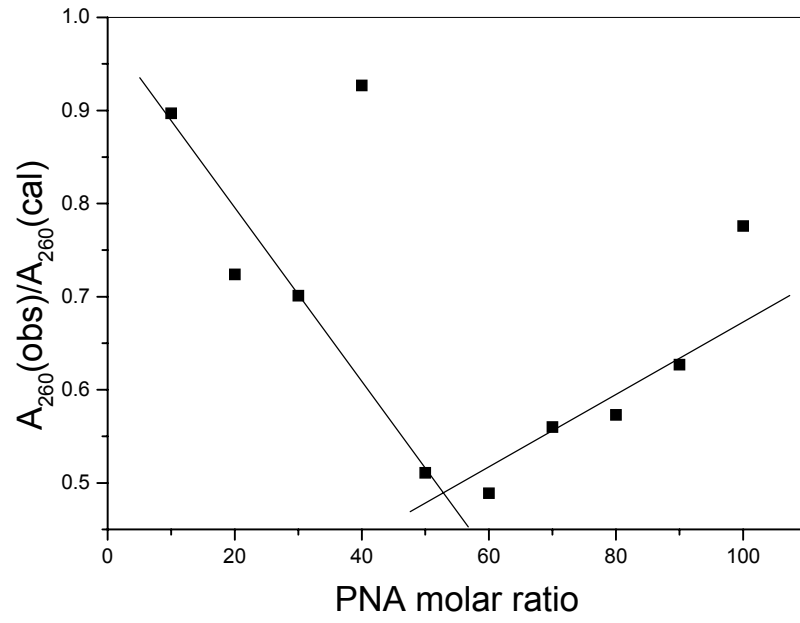




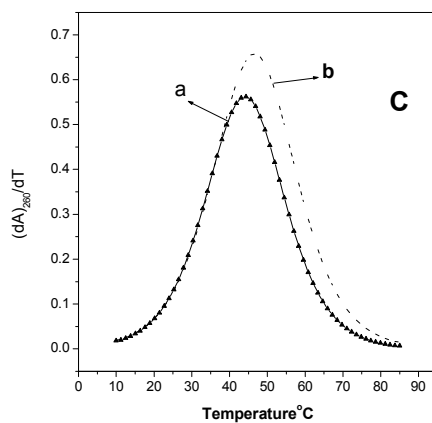
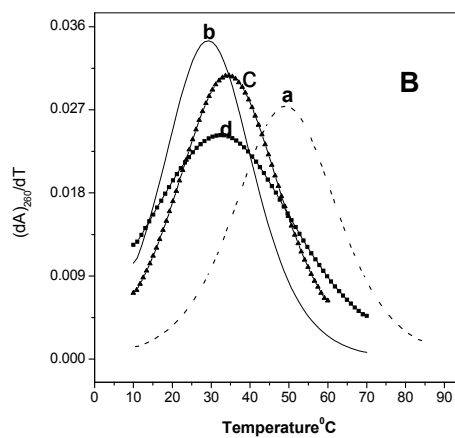
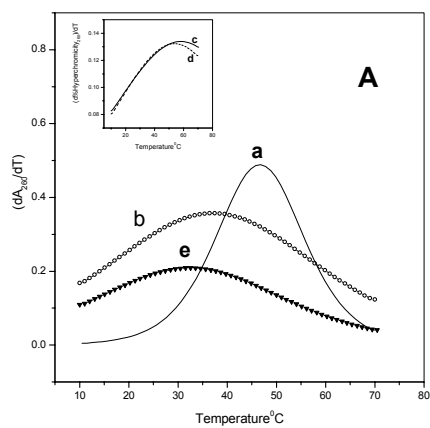
1:1 SL - 1001.am
 Acquired: 13:57:00, February 11, 2004

100% = 34 mV/sum = 1410 mV Profiles 1-41 Smooth Av 30 X2





UV-mixing Job's plot for PNA19:DNA24



UV Melting first derivative plots of PNA:DNA complexes **A**: (a) 16:24 (b) 17:24 (c) 18:24 (d) 19:24 (e) 20:24 **B**: (a) 16:24 (b) 21:24 (c) 22:24 (d) 23:24. **C**: (a) 18:27 (b) 19:27